

Christmas 1987



First Day of Issue



—Tom Wierco



USA 22 GREETINGS

FIRST

DAY OF

ISSUE



SCHULSON AUTOGRAPHS

HOLIDAY CATALOG 178 • DECEMBER 2017

SCHULSON AUTOGRAPHS

Claudia Strauss Schulson
PO BOX 54, Millburn, NJ 07041
(973) 379-3800
info@schulsonautographs.com

GUARANTEE

All material is guaranteed genuine, and this guarantee to refund the full purchase price is offered without time limit. Any item which is unsatisfactory for any other reason must be returned within three (3) business days after receipt. Exceptions must be made when placing an order.

TERMS

Net upon receipt of invoice for those who have established credit with us unless other arrangements are made at time of order.

- New customers who have not established credit with us should supply satisfactory trade references.
- Most orders are shipped via USPS tracking or registered, or FedEx and that, or any other postage, is additional on all orders.
- Checks payable to: Schulson Autographs.
We accept Visa, MasterCard and American Express.
- Libraries may receive deferred billing upon request.

ON THE WEB

Our website is updated regularly with new material.
Please visit us at schulsonautographs.com

ABBREVIATIONS

A.L.S.

Autograph Letter Signed
[written and signed by the person described].

L.S. [T.L.S.]

Letter Signed
[signed by the person described, but the text or body written by another or typewritten]

D.S.

Document Signed

A.Q.S.

Autograph Quotation Signed

A.N.S.

Autograph Note Signed

MEASUREMENTS

Vertical measurement given first.

4to

Quarto [approximately 11x8B/c inches]

8vo

Octavo [approximately 8x5 inches]

vn.d.

No date

n.p.

No place

n.y.

No year

ADDAMS, CHARLES

(1912–1988) American cartoonist known for his black humor and macabre characters. His is closely associated with "The New Yorker" magazine which published his cartoons regularly.

Original Cartoon Drawing Signed, pen and wash, on a 3.5 x 5.5 inch board, docketed on verso "1941." Unpublished as far as our research indicates.

Addams has drawn a humorous cartoon of a presumably naked hunter bathing in a lake surprised by a moose, close up. The moose's expression shows disapproval. The hunter, surprised, drops his soap in the lake. His shoes, hat and gun lay beside the lake. Addams signs in the lower left, "Chas Addams." Full docketing on verso: "Dec. 9, 1941" in pencil; "Sent Nov.12, 1941, Rec'd Dec. 9, 1941" in ink, both in another hand. A fine early cartoon ideal for a cartoon caption contest.

Addams created the characters that became known as The Addams Family, the basis for two live-action television series, two cartoon series, and many motion pictures. He also created a syndicated comic strip, "Out of This World," which ran in 1956.

\$1,600

ITEM ID: 4412

[View this listing on schulsonautographs.com](http://schulsonautographs.com)



CARUSO, ENRICO

(1873–1921) Italian opera singer and one of the greatest tenors in history.

Original Self Portrait Caricature Signed on his Carte-de-Visite, 12mo, New York, 1903.

Caruso has drawn his well known bust length profile in pen and ink. Signed, "Enrico Caruso, New York, [?] 1903." The drawing is rendered on the blank side of this visiting card which reads simply, "Enrico Caruso." The date of the drawing is significant. Caruso made his Metropolitan Opera debut on Nov. 23, 1903 in "Rigoletto" as the Duke of Mantua.

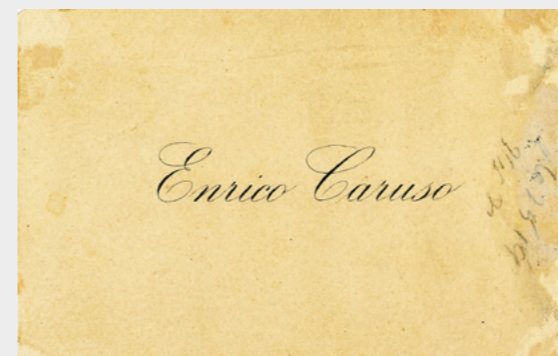
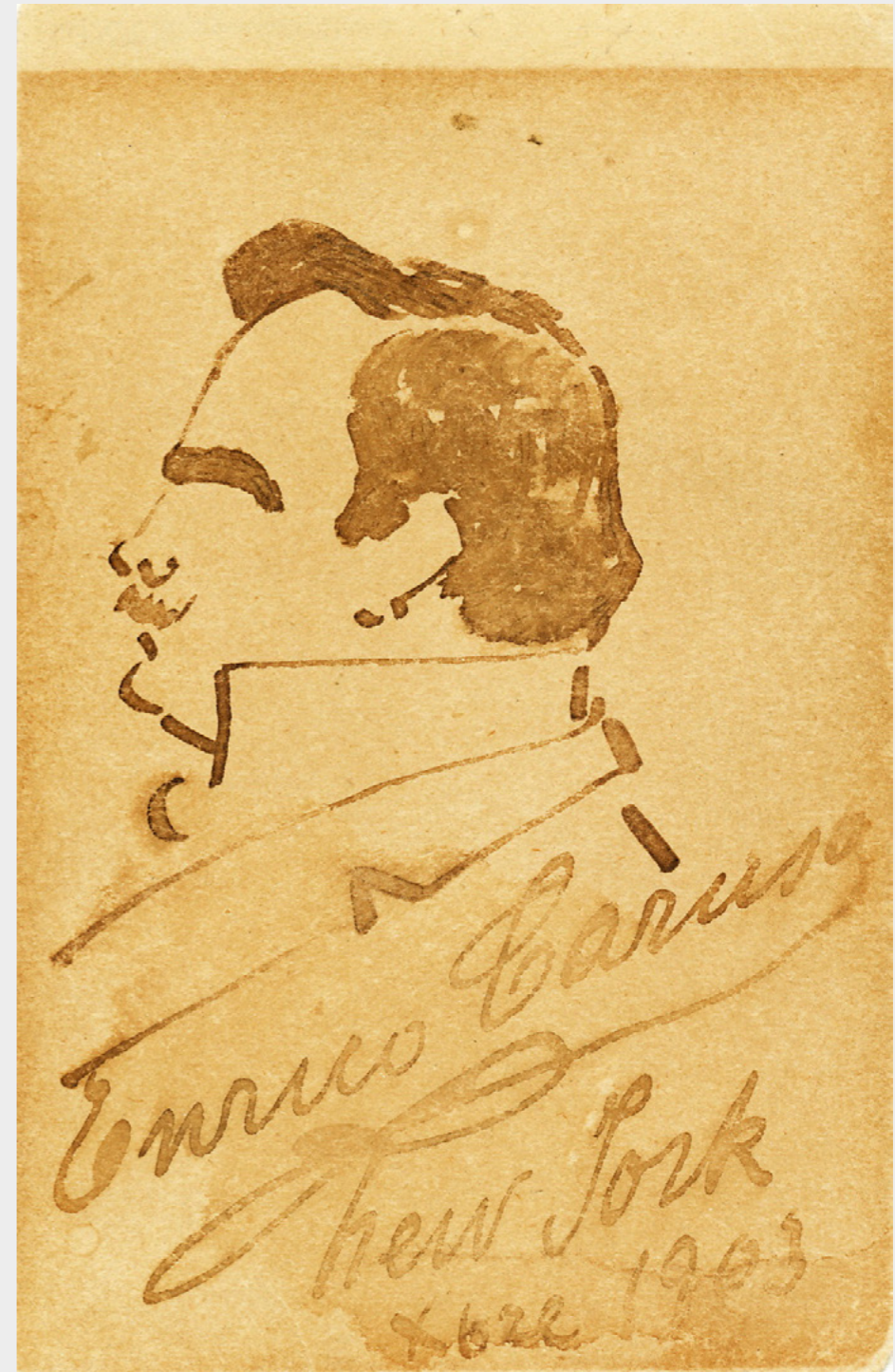
Condition: A clear image on sunned background with signature, place and date at the lower portion of the card lighter than the drawing, uneven fading to the card at the lower portion. On printed signature side, there is slight deterioration along one side and pencil docketing. Still, a good miniature signed self portrait by the great tenor.

Caruso was the most popular singers in any genre in the first two decades of the 20th Century and one of the most important pioneers of recorded music.

\$500

ITEM ID: 4417

[View this listing on schulsonautographs.com](https://www.schulsonautographs.com)



CHURCHILL, WINSTON

(1874–1965) British statesman known chiefly for his leadership of the United Kingdom during World War II. He served as Prime Minister from 1940 to 1945 and again from 1951 to 1955. A noted orator, historian, writer, and artist, he was awarded the Nobel Prize in Literature in 1953.

Photograph Signed as Prime Minister during World War II, 6.5 by 5.9 inches, 1944. Gelatin silver print signed on original mount. Photographer Walter Stoneman studio stamp on verso. Framed in black wood and museum glass, soft gray archival mat with opening on verso to show Stoneman's studio stamp. A classic and fine presentation.

Prime Minister Churchill, shown seated with his right arm resting on the edge of his Cabinet table and facing directly into the camera, has signed on the original mount, "Winston S. Churchill. He had apparently written the date as "1943," then crossed out "3" and changed it to "4" suggesting he signed the photograph in early 1944. Stoneman made the well known war time image for the national Photographic Record at the Cabinet Office on April 1, 1941. Churchill would give out this image, typically in smaller format, to those who worked for him during the war.

Condition: a few fingermarks and some silvering, with pinhead size break at upper left corner; some soiling to mount and slight wear at corners. Exceptional in size for this well known war time photograph.

\$7,900

ITEM ID: 4304

[View this listing on schulsonautographs.com](https://schulsonautographs.com)



ERTÉ (ROMAIN DE TIRTOFF)

(1892–1990) Russian-born French artist and designer recognized in the worlds of fashion, set and costume design, jewelry as well as graphic art. Associated with the Art Deco movement.

Autograph Letter Signed, in English, 2 separate folio pp with a 3 separate page folio addendum, all on printed "Erte" stationery, Paris, France, May, 7 1979 with signed transmittal envelope.

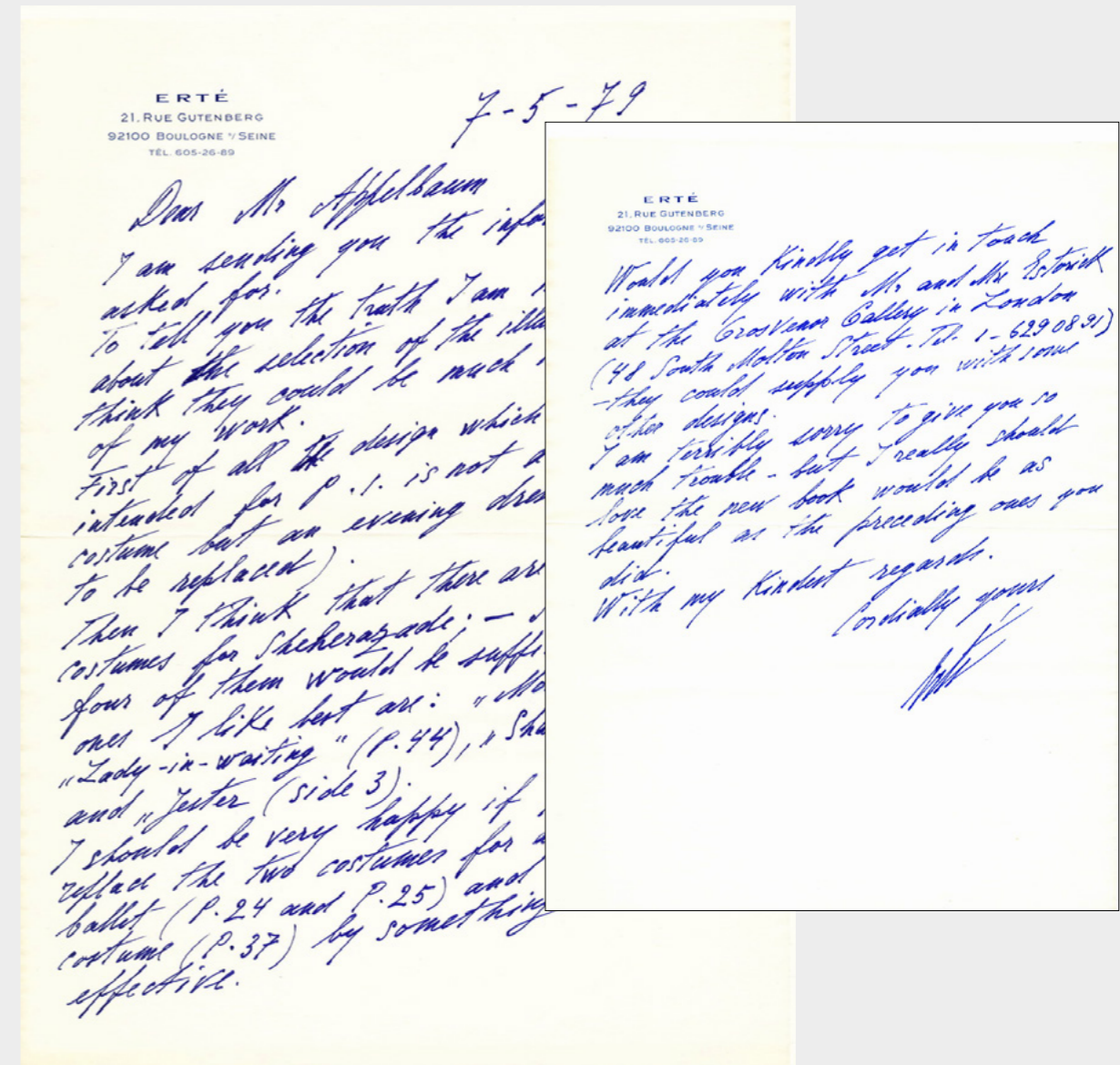
Erte discusses the illustrations to be included in "Erte's Theatrical Costumes in Full Color," published in 1979 by Dover (reprinted in 2016). He gives detailed notes on the costume selection and placement to Stanley Applebaum, Editor-in-Chief at Dover. "Erte's Theatrical Costumes in Full Color," is a collection of 49 of Erte's exotic and historical costume designs for theater productions (and for well-known theater personalities), ballets, Folies-Bergere, and the like from 1911-1975. Included in the book are designs for a fan bearing slave girl, worshipper of Horus, wife of Russian Boyar, Ceres, a mermaid, and a gypsy dancer. The published book includes changes Erte listed in our letter. For example, the cover shows a costume for Ganna Walska in "Manon," 1920. In the letter, Erte lists this work as being on p. 10, suggesting that after receiving this letter, Applebaum changed the placement of the costume design. The Gift-bearer for the show "Aladdin" at the Folies-Bergere, 1927 is in the book and in the letter is listed as being on p. 19. Erte mentions the design for the Monster from Scheherazade which is also in the book. Erte refers to Salome Estorick who wrote the book's preface.

Erte writes, "I am sending you the information you asked for. To tell the truth I am not very happy about the selection of the illustrations - I think they could be much more typical of my work. First of all the design which I suppose is intended for p.1 is not a theatrical costume but an evening dress (so it has to be replaced). Then I think that there are too many costumes for Sheherazade [sic]; - I believe that four of them would be sufficient; the ones I like best are: "Monster" (p. 43), "Lady-in-waiting" (p. 44), "Shahriar" (p. 46) and "Jester" (side 3). I should be very happy if you could replace the two costumes for a children ballet (p. 24 and p. 25) and the Chinese costume (p. 37) by something more effective.

Would you kindly get in touch immediately with M. and Mr. Estorick at the Grovesnor Gallery in London (48 South Molton Street. Tel - 1-6290891) -

Continued on next page...

"ERTE'S THEATRICAL COSTUMES IN FULL COLOR"



ERTÉ CONTINUED

they could supply you with some other designs. [Salome Estorick wrote the preface for Theatrical Costumes]. I am terribly sorry to give you so much trouble – but I really should love the new book would be as beautiful as the preceding ones you did...." He signs, "Erte." On the three page addendum, Erte lists page numbers and titles of illustrations or comments on the illustration, starting with "Side 2... Front Cover... p. 46 Side 3." A detailed letter regarding is theater costume book.

\$1,250

ITEM ID: 4407

[View this listing on schulsonautographs.com](http://schulsonautographs.com)

1)

ERTÉ
21, RUE GUTENBERG
92100 BOULOGNE / SEINE
TEL. 805-26-89

Side 2 "The Clock" - Alcazar de Marseille.
Front Cover "at Slave of Salome", scene
"Femmes Fatales".
P. 7 "Worshippers of Horus" scene called "Le Bal
des Arts" for the film "Restless Sex".
P. 9 Folies Bergère.
P. 10 "Manon" costume for Coma Wabbe.
Chicago Opera Company.
P. 11 } Chicago Opera Company.
P. 12 }
P. 13 }
P. 14 "The Woman and the Devil" a scene
in a show at the "Apollo Theatre"
in Paris.
P. 16 I don't remember
P. 17 For the number "La Femme et le
Diable" at the Theatre Apollo, Paris
P. 19 "A Gift-Bearer"
P. 20 costume of a Queen for the number
"La Femme et le Diable" at the Theatre
Apollo, Paris 1921
P. 21 "Casanova" in a show at the Scala Theatre in
Berlin 1930.
I don't remember the character

2)

ERTÉ
21, RUE GUTENBERG
92100 BOULOGNE / SEINE
TEL. 805-26-89

P. 22. At the Alhambra Theatre in Paris.
P. 23. For the show.
I don't remember where.
P. 24. At the Theatre du Chatelet in Paris,
for the musical comedy "Le Temple des
Merveilles".
P. 26 For the scene "The Plants" at the
Bal Tabarin in Paris.
P. 27 "Mermaid" in a show at the Bal Tabarin
Paris.
P. 28 "Parrot" for the ballet "Le Bal de l'Opéra"
at the Bal Tabarin in Paris.
P. 29 "Water". I don't remember the name of
the show.
P. 30 costume for the musical comedy "Yare"
at the Theatre du Chatelet.
P. 31 I can't understand what I wrote in.
P. 32 "Madame Snow" for the ballet
"Le Bal de l'Opéra" at the Bal Tabarin 1929
"Le Bal de l'Opéra" at the Bal Tabarin
P. 33 "Parrot" for the ballet "Le Paradis"
"Madame Butterfly" for the scene "Hercules"
P. 34 "Gipsy Queen" for a show at the Bal Tabarin 1942.
P. 35 "I don't remember the name of the show".
P. 36 "Out of Line" for the ballet "The Bottom of the Sea"
French Casino in New York 1946.

3)

ERTÉ
21, RUE GUTENBERG
92100 BOULOGNE / SEINE
TEL. 805-26-89

P. 37. Chinese costume for the scene "Cherish
Exhibition". "Nouvelle 90" musical
in Paris 1957.
P. 38. 18th Century costume for a show at
the Victoria Palace Theatre in London
1952.
P. 39 "Italian Singer" for the Opera "Cavalleria"
of Richard Strauss at the Opera Comique
Theatre in Paris 1957.
P. 40 "Male Cup-bearer" Project for the
ballet "Shcherzadé".
P. 41 } projects for the ballet "Shcherzadé".
P. 42 }
P. 43 }
P. 44 }
P. 45 }
P. 46 }
Side 3

FLAGG, JAMES MONTGOMERY

(1877–1960) American painter and illustrator; best known for creating the recruiting poster for World War 1, depicting "Uncle Sam," modeled on himself, with the caption, "I Want You."

Original Drawing Signed, with self portrait caricature, celebrating Christmas 1950, on heavy card stock measures 4 inches wide by 9.75 tall.

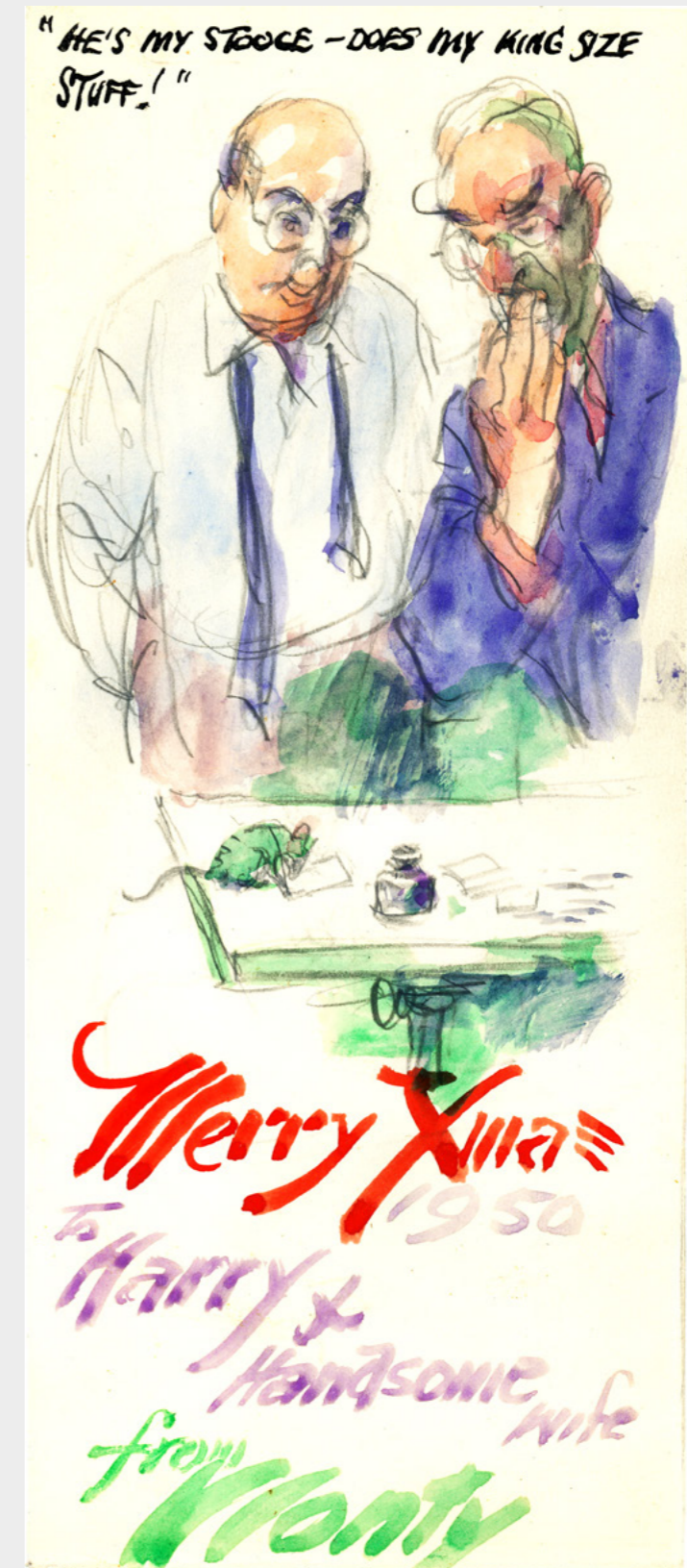
The drawing shows Flagg and fellow artist Harry Beckhoff Beckhoff watch a mouse, draw. Flagg has written a caption at the top margin of the card above the figures of himself and Beckhoff. Referring to the green shirted mouse with pen in hand, Flagg writes, "He's my stooge - does my king size stuff." Below the art table, he writes in red, "Merry Xmas, [in purple] 1950 to Harry X Handsome wife, [in green] from Monty." A bright and appealing ink and water color holiday illustration.

\$875

ITEM ID: 4420

[View this listing on schulsonautographs.com](http://schulsonautographs.com)

ORIGINAL DRAWING SIGNED WITH SELF PORTRAIT, CHRISTMAS 1950



HESSE, HERMANN

(1877–1962) German-Swiss poet, novelist, and painter. In 1946, he received the Nobel Prize in Literature. He is best remembered for his novels "Steppenwolf" and "Siddhartha".

Water Color Drawing on Autograph Letter of Ninon Hesse, in German, 4 pages on one 8vo sheet, n.p., March 17, 1940.

Hesse's pastel colored painting depicts a charming pink house situated among trees and shrubs against a blue mountain background, approximately three square inches. The drawing takes up half of the letter's first page which is folded along the lower black ink outline of the aquarelle. Ninon Hesse, an art historian and Hesse's third wife, authenticates the water color. "The aquarelle in the letterhead was painted by Hesse. Sometimes he gives me this kind of stationery." The bulk of her letter relates to wartime conditions. "I am desperate because since March 1 I am not permitted anymore to send food parcels to my aunt. I was so glad to do something for her and now it's over. Several other people are also affected by this new regulation which - from a Swiss point of view - is justified. Oh, if my aunt and Grete could soon emigrate to America! I am very depressed on account of Finland and since this morning completely hopeless because of Romania's political New Orientation...." Her reference to Finland may be to its signing a short-lived peace agreement with the Soviet Union in March shortly before she wrote this letter, and her reference to Romania likely refers to its support of Germany. Hesse and Ninon lived in Switzerland at the time of this letter. She ends her letter on a bright note with a brief anecdote about giving up free movie tickets.

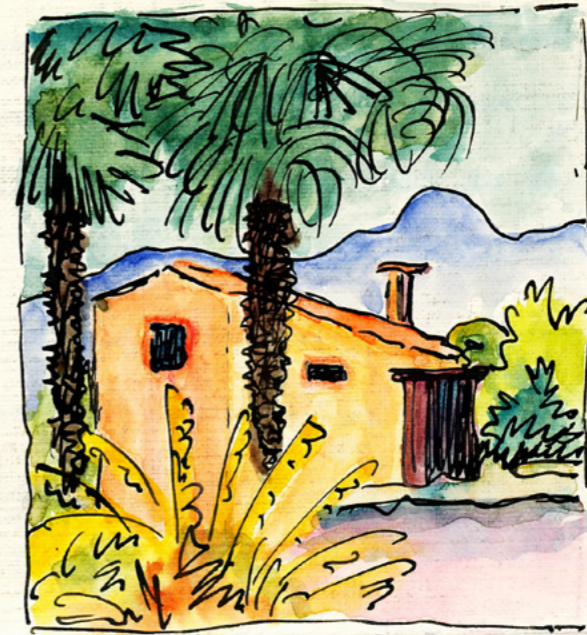
Condition: visible folds at slight crimping at top center above watercolor not affecting drawing.

\$4,500

ITEM ID: 4419

[View this listing on schulsonautographs.com](http://schulsonautographs.com)

WATER COLOR DRAWING



Lieber Otto, liebe Else,
Wie sehr ich Euch
bewundere kann ich gar nicht sagen!
Solche vergnügte - aber mehr als
das: positive - Briefe aus der Emigra-
tion bekommt man selten zu lesen,

HOUSTON, SAM. [KENNEDY, JOHN F.]

HOUSTON, (1793–1863), American statesman, politician, and soldier. He was a key figure in the history of Texas, including periods as President of the Republic of Texas, Senator for Texas after it joined the United States, and finally as governor.
KENNEDY (1917–63), 35th President of the United States.

Manuscript and Printed Document Signed, oblong 8vo, Texas, February 14, 1860.

This original document signed by Houston as Governor of Texas is a “Treasury Warrant” of the State of Texas endorsed on verso, “Sam Houston” Two cancellation marks affecting the bold signature.

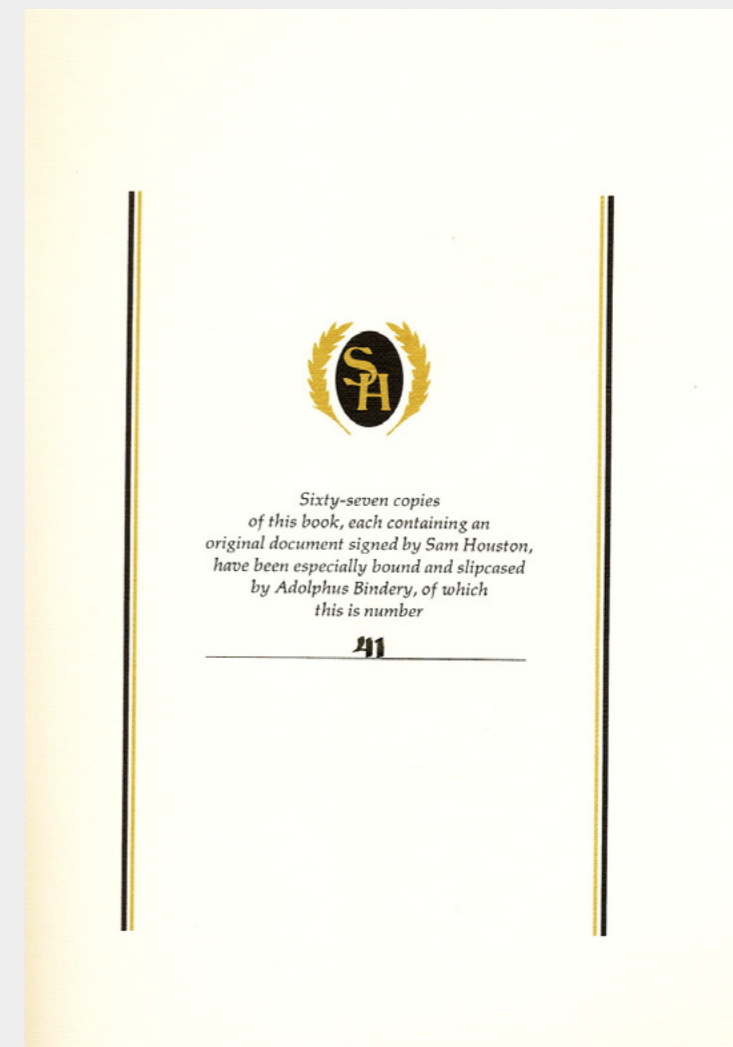
Houston’s signed warrant is slipped into a limited edition reprint of John F. Kennedy’s portrait of the Texan first published in Kennedy’s “Profiles in Courage.” This limited edition is titled, “Sam Houston & The Senate,” illustrated by Tom Lea. Folio. Original leather-backed paper boards, in publisher’s slipcase. The Pemberton Press, Austin & New York (1970). First separate edition. Limited to 67 copies; ours is number 41. An extremely attractive presentation. In mint condition.

\$1,500

ITEM ID: 938

[View this listing on schulsonautographs.com](http://schulsonautographs.com)

“TREASURY WARRANT”



KANE, BOB

(1915–98) American comic book artist and writer made famous by his creation of the super hero "Batman" for DC Comics.

Original sketch of Batman's masked face on card stock measuring 8 x 8 3/4 inches, signed.

This is a striking rendering of the enduring "Batman" face, front view. Kane has written, "BATS' WISHES, ALWAYS," on the left and signed on the right, "BOB KANE."

\$600 [CARTOON ART SALE, ORIGINAL PRICE \$750]

ITEM ID: 4415

[View this listing on schulsonautographs.com](https://www.schulsonautographs.com)

"BATS WISHES ALWAYS"



KELLY, WALT

(1913–73) American animator and cartoonist, known for his Pogo cartoon, worked for Disney and Dell Comics.

Original Drawing Signed, hand colored, on a card measuring 10 1/2 x 8 1/2 inches, drawing measures 8 1/2 by 7 1/4.

Kelly has drawn a sketch for a Christmas card, with instructions for reproduction on front and back. A comic deer like animal takes a rest. A Christmas stocking holly is attached to him as if the animal itself is the gift. The humorous and charming drawing shows cropping marks at the corners and at the top margin, "No. 12 Brown Outline," is penned but crossed out. A greeting card's company stick-on is attached to the back with reduction size noted. "Reduce to 3 1/2 x 4 1/4." Kelly signs with his familiar signature in capitals, "Walt Kelly," near the knee and tail. A charming image.

\$640 [CARTOON ART SALE, ORIGINAL PRICE \$800]

ITEM ID: 4411

[View this listing on schulsonautographs.com](https://schulsonautographs.com)

CHRISTMAS CARD SKETCH



O'CASEY, SEAN

(1880–1964) Major Irish dramatist and memoirist.; he was the first Irish playwright of note to write about the Dublin working classes.

Autograph Letter Signed discussing two of his plays, with illustration, on printed address stationery, Devon, Nov. 22, 1960. Unpublished in the "Letters of Sean O'Casey."

O'Casey refers to two of his little known plays, actors, the Abbey Theater and Lady Gregory. He writes to Lewis Funke, Esq. (1912-1992), drama editor, "The New York Times." O'Casey makes it clear at the outset and end of the letter that he is ill by drawing a sketch of himself lying on his back under a blanket, his feet sticking out, a pointed object hanging over his mouth. He writes under the self-portrait sketch, "And so to bed again," a fitting reference to the Diary of Samuel Pepys.

The letter reads: "Dear Lewis, Writing this from the De Profundis of a bed - a damned "Communitic" virus infiltrated into me body politick, and laid me low. 'Cooing of Doves' - at the time of its rejection, I told Gabriel Fallon, then a friend of mine and an Abbey [Abbey Theater] actor at the time, now a Director of the Abbey; and Barry Fitzgerald, another friend then & who is so still. Lady Gregory alone of the others remembered, and, when I went to Coole Park, she mentioned how happily the "Cooing of Doves" became welded into the heart of another play. It went in with but a few minor changes, but what puzzled me was why "Kathleen Listens In" [a lost early play of O'Casey] was preferred to it in the first instance; for then puzzlement was the one way of solving it, for I know very little then about Theater or anything else. I'm glad Phyllis was there to hear what I said about her. Next time she's with you, give her a kiss form me - a real affectionate one. My love to Mrs. Funke....as ever Sean...."

Lewis Bernard Funke was a freelance writer, born in the Bronx in 1912. He worked for "The New York Times" as a sports writer from 1928-1944 when he became drama editor and assistant drama critic. He continued to work for The Times until 1973 as Drama critic and editor. The next seven years were spent as visiting professor School Theater, Florida State University, Tallahassee. During this same period and further to 1986, he was a public relations consultant for the Eugene O'Neill Memorial Theater Center. Sean O'Casey and Lewis Funke had a correspondence that lasted at least from 1955 through 1961.

Continued on next page...

"COOING OF DOVES" AND "KATHLEEN LISTENS IN"

Lewis Funke, Esq. 22/11/60.
Flat 3, 40 Trumlands Road, St. Marychurch, Torquay, Devon.
Tel. : Torquay 87766.

Dear Lewis. Writing this from the De Profundis of a bed - a damned "Communitic" virus infiltrated into me body politick, and laid me low.

"Cooing of Doves" - at the time of its rejection, I told Gabriel Fallon, then a friend of mine, and an Abbey actor at the time, now a Director of the Abbey; and Barry Fitzgerald, another friend then & who is so still.

Lady Gregory alone of the others remembered, and, when I went to Coole Park, she mentioned how happily the "Cooing of Doves" became

O'CASEY, SEAN CONTINUED

Sean O'Casey's first plays were performed at the Abbey Theatre in Dublin where he was born. In about 1926, due to his "penchant for argument," he was cast out of the Abbey and cast himself out of Ireland. In 1923 he submitted a play, "Cooing of Doves," to the Abbey and William Butler Yeats rejected it. It was later incorporated into "The Plough and The Stars," but it was never performed as a one-act play and was lost for 80 years, not coming to light again until 2005.

Another one of O'Casey's lost plays was a one-act play entitled "Kathleen Listens In." Robert Caswell, a student at Trinity College, Dublin, found the lost manuscript in 1958. A letter from Robert H. Hethmon, assistant professor at University of Wisconsin, dated December 22, 1960, mentions the publication of "Kathleen Listens In" in "The Tulane Drama Review." Documentation in O'Casey's Papers at the National Library of Ireland notes that sometime in the second half of 1960, O'Casey met with Gabriel Fallon, the actor who proposed a book of O'Casey's early works, a book to be edited by Robert Hogan. It was published, in 1962, as "Feathers From the Green Crow: Sean O'Casey 1905-1925." The note in the Papers also comments on "Kathleen Listens In" as being "held by Fallon."

The Abbey Theatre in Dublin was co-founded by the Irish dramatist, Lady Augusta Gregory and William Butler Yeats. Lady Gregory was a Director of the Abbey Theatre. She lived in Coole Park, County Galway where she entertained the likes of Yeats and George Bernard Shaw.

Gabriel Fallon was an actor and friend of O'Casey's, even in 1960 based on evidence in The Papers. He also reviewed plays for the Evening Press in Dublin at this time.

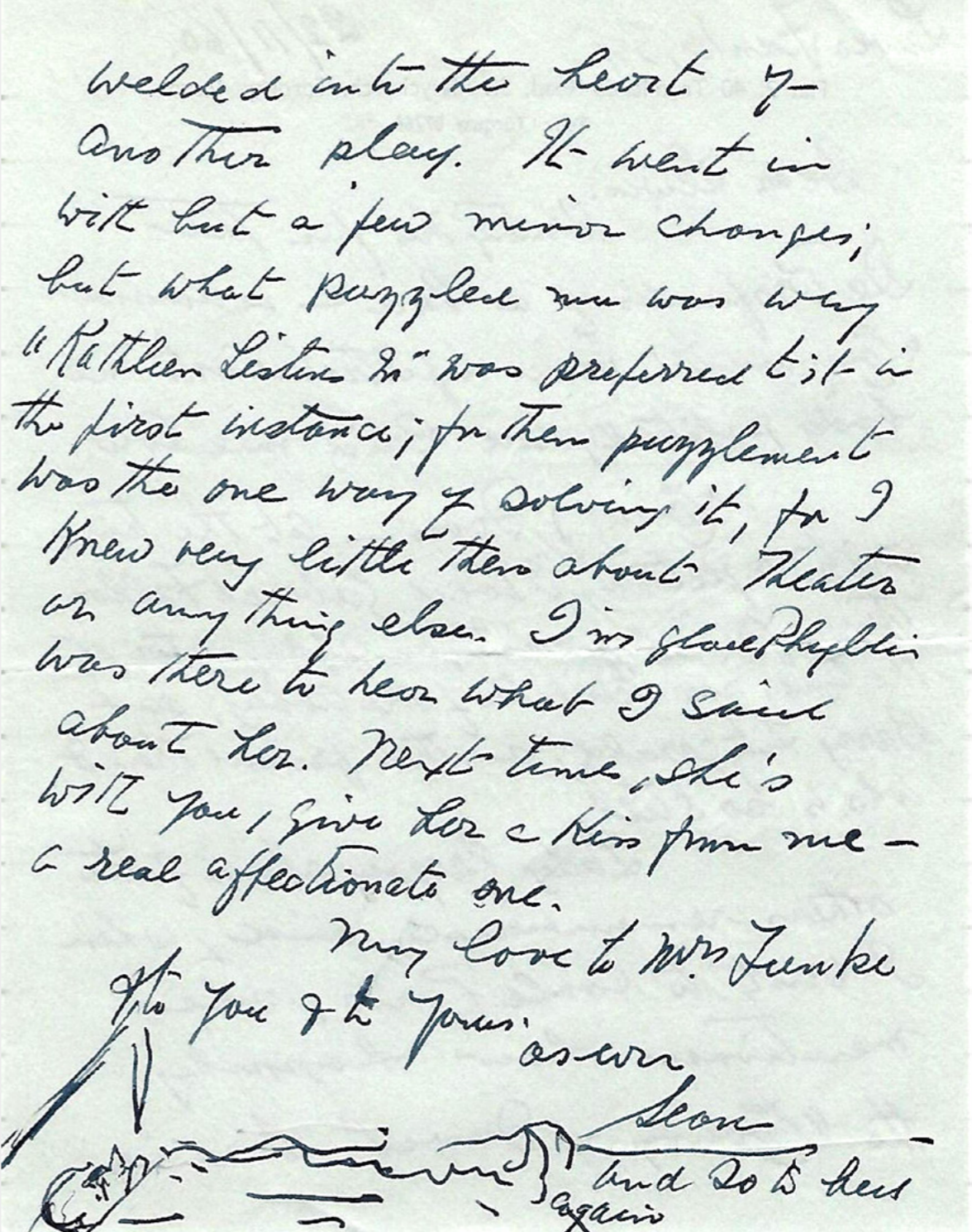
Barry Fitzgerald, born Will Shields, was also an actor. He, and his brother, Arthur Shields, were in the 1937 John Ford film of O'Casey's "The Plough and the Stars."

O'Casey ends the letter on a personal note, referring to Funke's daughter, Phyllis, who, at the time of this letter was probably in high school as in 1964 she was enrolled at Columbia University, and also referring to Funke's wife.

\$2,700

ITEM ID: 4356

[View this listing on schulsonautographs.com](http://schulsonautographs.com)



welded into the heart of
Another play. It went in
with but a few minor changes;
but what puzzled me was why
"Kathleen Listens In" was preferred to it in
the first instance; for then my complement
was the one way of solving it, for I
knew very little then about theater
or anything else. I'm glad Phyllis
was there to hear what I said
about her. Next time, she's
with you, give her a kiss from me -
a real affectionate one.

My love to Mrs Funke
to you & to yours
as ever
Sean
and so to best
again

SCHULZ, CHARLES M., WILSON, TOM

Schulz (1922–2000). American comic-strip artist, creator of the popular comic strip "Peanuts". WILSON (1931–2011) American cartoonist creator of Ziggy.

Snoopy, full length and smiling, and Ziggy, also full length, look out to the viewer of this Christmas 1987 First Day Cover, postmarked, "Holiday, CA" Oct. 23, 1987.

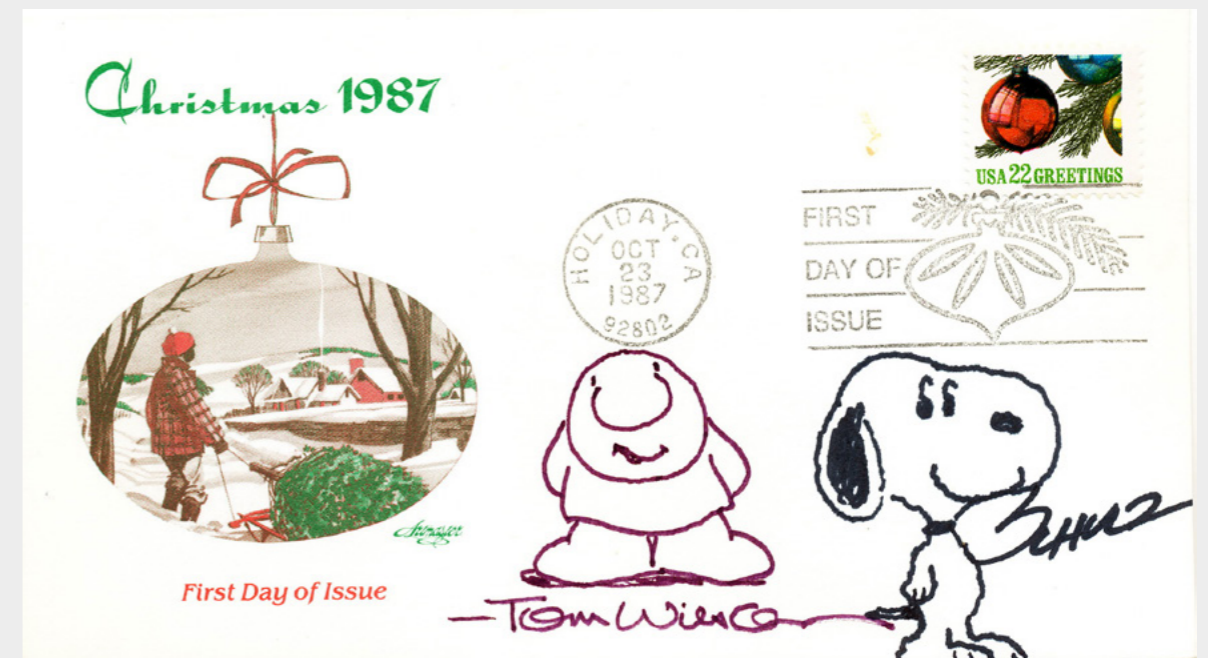
Schulz has signed under Snoopy's smiling face, "Schulz," and Wilson has below Ziggy's feet, "Tom Wilson." A charming holiday presentation.

\$500 [CARTOON ART SALE, ORIGINAL PRICE \$625]

ITEM ID: 4416

[View this listing on schulsonautographs.com](https://schulsonautographs.com)

CHRISTMAS 1987



SHOCKLEY, WILLIAM

(1910–89) American physicist and inventor, co-inventor of the silicon based transistor for which he shared the Nobel Prize in physics in 1956. His use of silicon in transistors led the way to the information technology revolution and to its birth place nicknamed "Silicon Valley." Shockley's later views associating race with intelligence sullied his scientific significance.

Original Drawing of a Junction Transistor, Signed, on an 8vo black and white photograph.

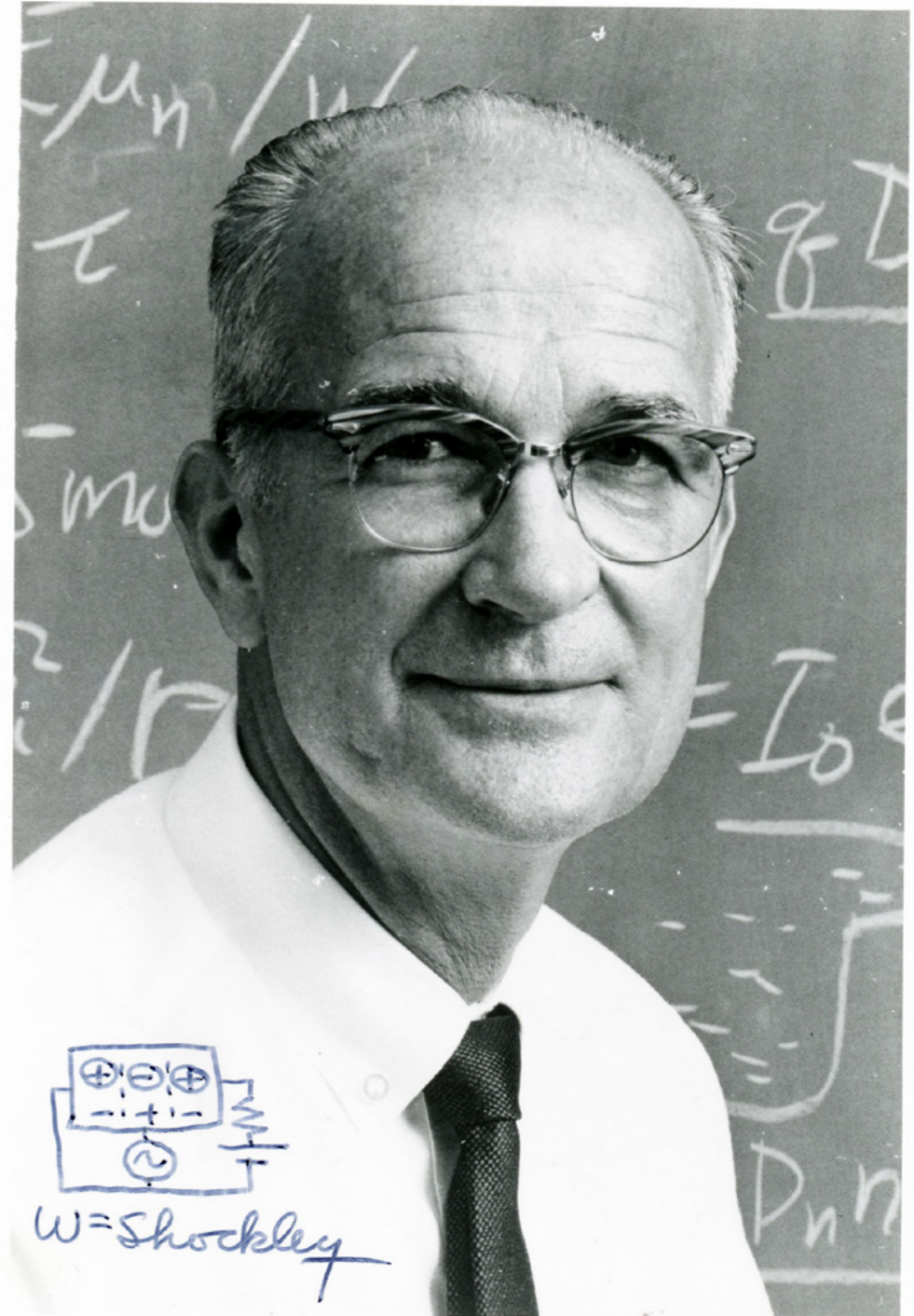
On a close-up bust length photograph showing Shockley against a blackboard with scientific notation, he has drawn a transistor and signed, "W=Shockley." The photo measures 5 x 7.25 inches; the drawing measures approximately 1 inch wide by 3/4 inch high.

\$275

ITEM ID: 4418

[View this listing on schulsonautographs.com](https://www.schulsonautographs.com)

JUNCTION TRANSISTOR



TRUFFAUT, FRANÇOIS

(1932–84) French film maker, screenwriter and film critic, a founder of French New Wave cinema with his film, "The 400 Blows."

Autograph letter signed, in French, folio, n.p., n.d but 1980.

Truffaut's "Le Dernier Metro" [The Last Metro]" is about to open when Truffaut expresses his trepidation to American editor and translator Stanley Hochman. Truffaut writes in his large hand, "My newest film, 'The dernier metro' will be at the movie houses Wednesday and I am very nervous...." Truffaut had missed Hochman because he had no news from him but offers to talk on the phone and gives his number. "The Last Metro" won 10 Cesar Awards including one for Truffaut as best director and was nominated for an Academy Award for best foreign film of 1980. With envelope addressed in Truffaut's hand and with no postal markings.

\$750

ITEM ID: 4421

[View this listing on schulsonautographs.com](http://schulsonautographs.com)

"THE LAST METRO"

800 N. 425
Nervous about the Last Metro

Chey Ami,
reellement 'désolé' de vous avoir
manqué. Sous nouvelles de vous,
j'ai pensé que vous n'étiez pas
venu à Paris.

Voici des liens pour vous. Mon
dernier film "le dernier metro" sera
dans les salles mercredi et je suis
très nerveux.

Nous pourrions nous parler par
téléphone demain dimanche ? Mon
numéro à la maison est
723.67.74.

Bon séjour à Paris,
amicalement,
Truffaut

For over 35 years, Schulson Autographs, Ltd. (formerly David Schulson Autographs, Ltd.) has offered noteworthy historical autographs in the fields of literature, art, science, music, history and politics, and classic cinema. The autographs shown on our website represent a portion of our reserve of fine autograph material.

schulsonautographs.com

If you don't see it on our website, email us at:

info@schulsonautographs.com

Follow Schulson Autographs on Social Media:

Facebook: [@schulsonautographs](https://www.facebook.com/schulsonautographs)

Instagram: [@Schulson_Autographs](https://www.instagram.com/Schulson_Autographs)

Twitter: [@SchulsonA](https://twitter.com/SchulsonA)

